

# 45th NEW ZEALAND CORRESPONDENCE CHAMPIONSHIP

	1	2	3	4	5	6	7	
1. R. W. SMITH	—	01	1½	11	01	11	11	9½
2. W. LYNN	10	—	10	0½	11	11	11	8½
3. P. W. STUART	0½	01	—	10	11	11	11	8½
4. T. VAN DIJK	00	1½	01	—	11	1½	11	8
5. B. W. ANDERSON	10	00	00	00	—	11	01	4
6. A. L. FLETCHER	00	00	00	0½	00	—	11	2½
7. P. K. BEACH	00	00	00	00	10	00	—	1

## Chess

### First through the post

ROBERT SMITH of Auckland has won the 45th New Zealand correspondence chess championship after a year-long battle. Smith, a television journalist, is also well-known in over-the-board play and in 1975 won the premier reserve championship.

In 1976 he represented New Zealand at the Haifa

Olympiad in Israel, scoring 5/11, and I met him on a number of occasions during his subsequent 11-month European tour. In fact during his stay in England he joined the London club of Streatham — arch-rivals of my club Charlton!

The following game from the correspondence cham-

ampionship shows Smith winning an excellent positional game with the Black pieces. His opponent, Peter Stuart, is also a New Zealand championship and Olympiad player.

#### ENGLISH OPENING

P. STUART	R. W. SMITH
1. c4	Nf6
2. Nc3	e5
3. Nf3	Nc6
4. g3	Bb4
5. Bg2	0-0
6. Nd5	

Better is 6.0-0 e4 7.Ne1 although Black can equalise with 7...Bxc3 8.dxc3 h6 9.Nc2 Re8 10.Ne3 d6 11.Qc2 a5! as in the sixth game of the Karpov-Korchnoi match in Baguio last year. At the time that game was played Smith and Stuart were probably in the middlegame!

6. . . .	e4
7. Nh4	Bc5
8. 0-0	Re8
9. d3	Nxd5
10. cxd5	exd3
11. Qxd3	

Trying to be clever with 11.dxc6 dxe2 12.cxb7 fails to 12...Bxb7!

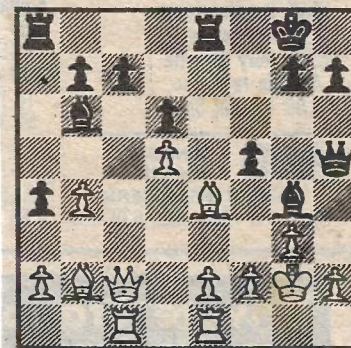
11. . . .	Ne5
12. Qc2	d6
13. b3	a5
14. Bb2	Bd7
15. Nf3	

The knight was not effectively stationed on h4, but now Black's queen finds a useful square.

15. . . .	Nxf3 ch
16. Bxf3	Qg5!
17. Kg2	a4
18. b4	Bb6

If 18...Bxb4 then 19.Qxc7. Now Stuart should play 19.Rfd1 to exchange Smith's raking black-square bishop after 20.Bd4. Smith could not tactically refute this plan by 19...a3 20.Bd4 Ba4 (skewering queen and rook) as 21.Qd2 attacks Black's queen and the game is level.

19. Rac1?	Bg4
20. Be4	Qh5
21. Rfe1	f5



#### 22. Bf3

22.Bd3 would be fatal — 22...Qh3 ch 23.Kg1 Bxf2 ch! 24.Kxf2 Qxh2 ch 25.Kf1 Bh3 checkmate.

22. . . .	Re7
23. Qd3	Rae8

Threatening 24...Qh3 ch 25.Kg1 Bxf2 ch 26.Kxf2 Qxh2 ch 27.Bg2 Bh3 28.Rg1 (28.Qf3 loses to 28...Re3) Bxg2 29.Rxg2 Rxè2 ch! etc. It is interesting how these devastating threats are used to force weaknesses — see White's 25th move.

24. Bxg4	fxc4
25. e3	Rf8

Intending brute force again

with 26...Rxf2 ch, but Smith also has a more subtle idea in mind.

26. Re2 Rf5!

The point — White must cover the d5 pawn and Black piles up on the h-file.

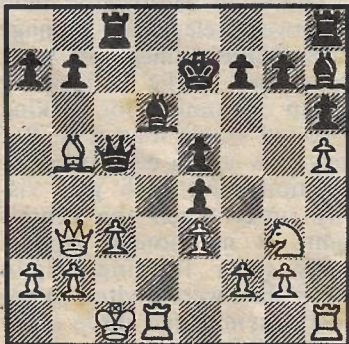
27. Rd2	Qh3 ch
28. Kg1	Rh5
29. Qc4	Qxh2 ch
30. Kf1	Bxe3!
31. Resigns	

\* \* \*

The new British champion, Robert Bellin, is a self-assured and determined International Master. To reach the following position against 17-year-old William Watson in round three of the British, Bellin deliberately employed an unusual system to get the youngster out of the books and was rewarded by keeping Black's king in the centre.

With what move did he take advantage of this?

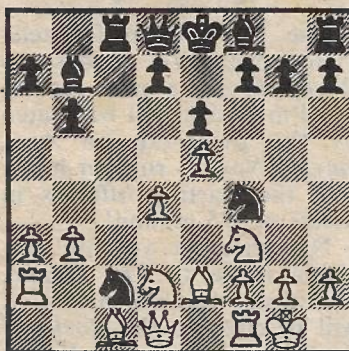
WATSON



BELLIN

SOLUTION: Bellin played 1.Rxd6! On 1...Qxd6 2.Rd1 followed by 3.Rd7 ch wins (or 2...Qf6 3.Qb4 ch) while 1...Kxd6 2.Qxf7! cuts off the king's retreat and he perishes after 2...Qxb5 3.Rd1 ch Kc6 4.Qe6 ch Kc7 5.Qd6 mate.

D. SAHOVIC (Yugoslavia)



P. VAN DER STERREN (Holland)

In the above position, from the Lone Pine tournament this year, Black found a fine combination to win material and ultimately the game. Can you spot it?

SOLUTION: Sahovic played 1...Ne3! 2.fxe3 Rxc1! 3.Qxc1 Nxe2 ch winning White's queen, and van der Sterren resigned a few moves later.

MURRAY CHANDLER

#### ALGEBRAIC NOTATION

The algebraic notation in this chess column is that used almost exclusively in Europe and in many countries elsewhere. Each square has one designation only. The vertical files are labelled a to h from White's left. In horizontal rank the squares are labelled 1 to 8 from White's end. Normal symbols are used, except that pawns as such are not mentioned; just the arrival square is given for a non-capturing pawn move.



Robert Smith